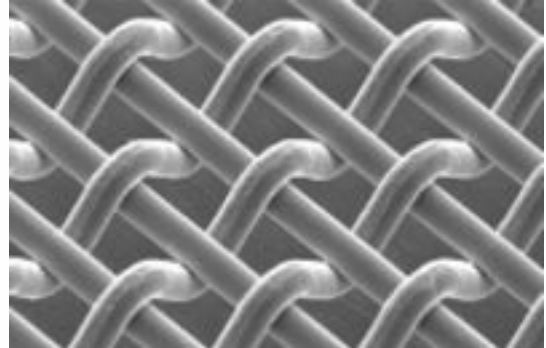


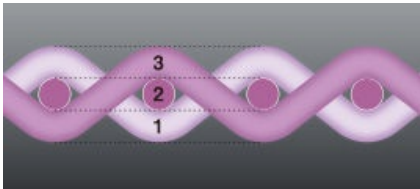
product solution

Asada 3D-mesh®-Type 3D Metal Mesh

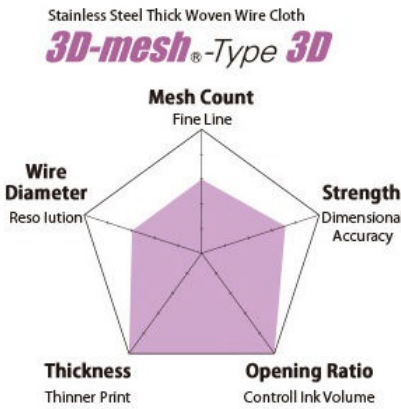
3D Metal Mesh is woven in a special structure that yields a mesh three times thicker than the wire diameter. This makes it possible to achieve 1.5 times higher printing thickness and remarkable leveling capability. 3D Mesh is especially suitable for thick coat printing.



PRODUCT IMAGES



Cross Section View



3D Mesh Characteristics Chart

product solution

Asada 3D-mesh®-Type 3D Metal Mesh

ITEM DETAILS

MESH CODE	MESH COUNT /in	MESH COUNT /cm	WIRE DIAMETER in	WIRE DIAMETER mm	MESH OPENING in	MESH OPENING mm	OPEN AREA %	STANDARD THICKNESS μm	LIGHT CALENDERING THICKNESS μm	MEDIUM CALENDERING THICKNESS μm	HEAVY CALENDERING THICKNESS μm
3D-500-53	500	197	0.0007	0.019	0.0013	0.032	39	53 \pm 3	N/A	N/A	N/A
3D-400-54	400	157	0.0007	0.019	0.0018	0.045	49	54 \pm 3	N/A	N/A	N/A
3D-400-66	400	157	0.0009	0.023	0.0016	0.041	41	66 \pm 3	N/A	N/A	N/A
3D-325-77	325	128	0.0011	0.028	0.002	0.05	41	66 \pm 3	N/A	N/A	N/A
3D-250-85	250	98	0.0012	0.03	0.0028	0.072	50	85 \pm 3	N/A	N/A	N/A
3D-200-115	200	79	0.0016	0.04	0.0034	0.087	47	115 \pm 4	N/A	N/A	N/A
3D-165-126	165	65	0.0018	0.045	0.0043	0.109	50	126 \pm 5	N/A	N/A	N/A
3D-80-225	80	31	0.0031	0.08	0.0094	0.238	56	225 \pm 5	N/A	N/A	N/A