

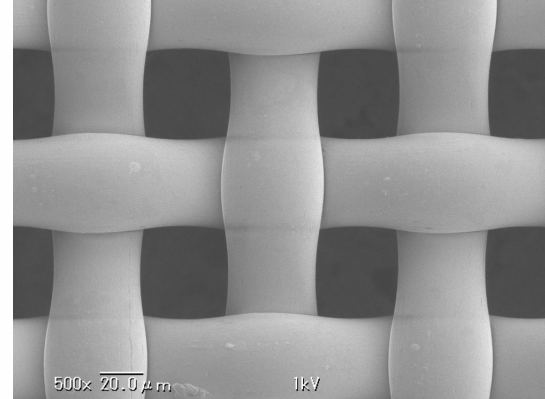
product solution

# NBC Nylon 6.6 Mesh

NBC's Nylon 6.6 mesh is made of industry standard Nylon 6.6 and used widely for filtration and fashion applications. It offers excellent abrasion resistance, and is chemical resistant with a good resistance to alkaline. However, Nylon 6.6 mesh is not acid resistant, dissolvable by concentrated sulfuric, hydrochloric and nitric acids.

## FEATURES

- 15-38% elongation when dry
- 20-45% elongation when wet
- 98-100% elasticity recovery after 3% stretched



## PRODUCT OPTIONS

*Mesh Specifications* vary to meet a variety of applications. This mesh is available in the following ranges:

### Thread Diameter

30 - 670  $\mu\text{m}$

### Mesh Count

10 - 508 per inch

### Mesh Opening

20 - 2000  $\mu\text{m}$

### Pattern

Plain, Twill, Satin

*Primary Treatments* are optional procedures that chemically enhance the performance of the mesh or manipulate its appearance in various ways. These treatments include:

### Dyeing

Dyeing changes the mesh's color for an aesthetic effect

### Resin Coating

Coating can add an anti-static property as well as allow the mesh to be either hydrophilic or hydrophobic

product solution

# NBC Nylon 6.6 Mesh

## **Corona Treatment**

Corona enhances the mesh's adhesion property and adds a hydrophilic property

## **Calendering**

Calendering creates a flatter surface and can thin out the mesh as well as affect the mesh's open area

## **Sputtering**

Sputtering effects the electrical conductivity and enhances the anti-static property of the mesh

*Secondary Treatments* are optional procedures that physically manipulate the mesh to prepare it for inclusion in a custom product. These treatments include:

## **Die Cutting**

Die cutting creates precisely cut pieces of mesh in various shapes and sizes

## **Welding**

Welding melds pieces of the mesh together

## **Slitting**

Slitting creates evenly divided sections of mesh

## **Sewing**

Sewing also holds folded pieces of mesh together

## **Pleating**

Pleating folds the mesh together in order to correspond with potting

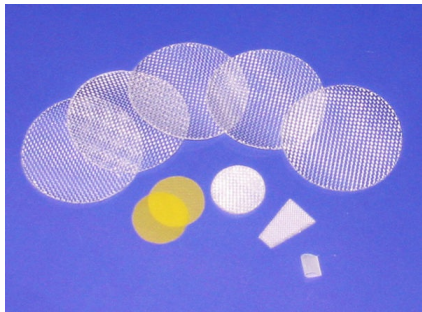
## **Stretching**

Stretching allows easier attachment to mesh frames

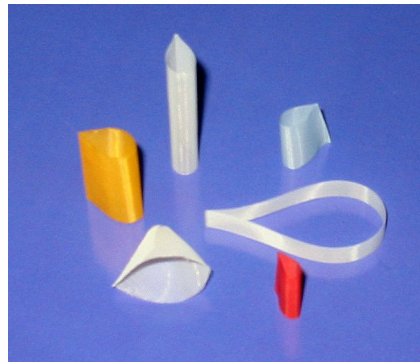
product solution

# NBC Nylon 6.6 Mesh

## PRODUCT IMAGES



Die Cutting (Secondary Treatment)



Welding (Secondary Treatment)



Slitting (Secondary Treatment)



Sewing (Secondary Treatment)



Pleating (Secondary Treatment)

## ITEM DETAILS

MESH CODE	MESH OPENING µm	OPEN AREA (%)	WARP MESH COUNT /in	WARP MESH COUNT /in	WARP MESH COUNT /cm	WARP MESH COUNT /cm	THREAD DIAMETER µm	MESH THICKNESS µm	WEAVE TYPE	STANDARD WIDTH cm (in)
NL 0020/16TW	0020	16	508.0	508.0	200.0	200.0	030	060	TW	115 (45)
NL 0025/21TW	0025	21	460.0	460.0	180.0	180.0	030	060	TW	115 (45)
NL 0025/17TW	0025	17	420.0	420.0	165.0	165.0	035	070	TW	115 (45)
NL 0030/25PW	0030	25	420.0	420.0	165.0	165.0	030	051	PW	115 (45)
NL 0032/23TW	0032	23	380.0	380.0	150.0	150.0	035	068	TW	115 (45)
NL 0037/30PW	0037	30	380.0	380.0	150.0	150.0	030	055	PW	115 (45)
NL 0037/26TW	0037	26	355.0	355.0	140.0	140.0	035	066	TW	115 (45)

product solution

# NBC Nylon 6.6 Mesh

MESH CODE	MESH OPENING µm	OPEN AREA (%)	WARP MESH COUNT /in	WARP MESH COUNT /in	WARP MESH COUNT /cm	WARP MESH COUNT /cm	THREAD DIAMETER µm	MESH THICKNESS µm	WEAVE TYPE	STANDARD WIDTH cm (in)
NL 0040/23TW	0040	23	305.0	305.0	120.0	120.0	043	082	TW	115 (45)
NL 0042/34PW	0042	34	355.0	355.0	140.0	140.0	030	052	PW	115 (45)
NL 0042/30TW	0042	30	330.0	330.0	130.0	130.0	035	066	TW	115 (45)
NL 0047/37PW	0047	37	330.0	330.0	130.0	130.0	030	050	PW	115 (45)
NL 0048/33PW	0048	33	305.0	305.0	120.0	120.0	035	060	PW	115 (45)
NL 0053/41PW	0053	41	305.0	305.0	120.0	120.0	030	053	PW	115 (45)
NL 0057/32PW	0057	32	255.0	255.0	100.0	100.0	043	075	PW	115 (45)
NL 0059/39PW	0059	39	270.0	270.0	106.0	106.0	035	060	PW	115 (45)
NL 0062/25TW	0062	25	206.0	206.0	81.0	81.0	061	116	TW	115 (45)
NL 0067/37PW	0067	37	230.0	230.0	90.0	90.0	043	075	PW	115 (45)
NL 0069/28PW	0069	28	196.0	196.0	77.0	77.0	061	111	PW	115 (45)
NL 0076/31PW	0076	31	185.0	185.0	73.0	73.0	061	114	PW	115 (45)
NL 0077/37PW	0077	37	200.0	200.0	79.0	79.0	050	086	PW	115 (45)
NL 0077/27TW	0077	27	173.0	173.0	68.0	68.0	070	133	TW	115 (45)
NL 0082/26PW	0082	26	157.0	157.0	62.0	62.0	080	146	PW	115 (45)
NL 0092/32PW	0092	32	157.0	157.0	62.0	62.0	070	118	PW	115 (45)
NL 0095/43PW	0095	43	175.0	175.0	69.0	69.0	050	087	PW	115 (45)
NL 0100/31PW	0100	31	140.0	140.0	55.0	55.0	080	140	PW	115 (45)
NL 0105/40PW	0105	40	150.0	150.0	59.0	59.0	061	106	PW	115 (45)
NL 0110/37PW	0110	37	140.0	140.0	55.0	55.0	070	126	PW	115 (45)
NL 0123/37PW	0123	37	125.0	125.0	49.0	49.0	080	142	PW	115 (45)
NL 0133/43PW	0133	43	125.0	125.0	49.0	49.0	070	121	PW	115 (45)
NL 0150/43PW	0150	43	110.0	110.0	43.0	43.0	080	140	PW	115 (45)
NL 0155/30TW	0155	30	90.0	90.0	35.4	35.4	127	270	TW	102 (40)
NL 0160/48PW	0160	48	110.0	110.0	43.0	43.0	070	121	PW	115 (45)

product solution

# NBC Nylon 6.6 Mesh

MESH CODE	MESH OPENING µm	OPEN AREA (%)	WARP MESH COUNT /in	WARP MESH COUNT /in	WARP MESH COUNT /cm	WARP MESH COUNT /cm	THREAD DIAMETER µm	MESH THICKNESS µm	WEAVE TYPE	STANDARD WIDTH cm (in)
NL 0190/36PW	0190	36	80.0	80.0	31.5	31.5	127	240	PW	102 (40)
NL 0200/39PW	0200	39	79.5	79.5	31.3	31.3	120	-	PW	120 (47)
NL 0225/43PW	0225	43	74.0	74.0	29.1	29.1	120	-	PW	120 (47)
NL 0235/42PW	0235	42	70.0	70.0	27.6	27.6	127	-	PW	120 (47)
NL 0245/43PW	0245	43	68.5	68.5	27.0	27.0	127	-	PW	120 (47)
NL 0250/44PW	0250	44	67.5	67.5	26.6	26.6	127	-	PW	120 (47)
NL 0260/37PW	0260	37	60.0	60.0	23.6	23.6	165	320	PW	102 (40)
NL 0260/37PW	0260	37	60.0	60.0	23.6	23.6	165	320	PW	102 (40)
NL 0265/41PW	0265	41	61.0	61.0	24.0	24.0	150	-	PW	120 (47)
NL 0275/42PW	0275	42	59.5	59.5	23.4	23.4	150	-	PW	120 (47)
NL 0280/42PW	0280	42	59.0	59.0	23.2	23.2	150	-	PW	120 (47)
NL 0300/44PW	0300	44	56.5	56.5	22.2	22.2	150	-	PW	120 (47)
NL 0310/42PW	0310	42	53.5	53.5	21.1	21.1	166	-	PW	120 (47)
NL 0310/37PW	0310	37	50.0	50.0	19.7	19.7	200	380	PW	102 (40)
NL 0315/43PW	0315	43	53.0	53.0	20.9	20.9	166	-	PW	120 (47)
NL 0335/45PW	0335	45	50.5	50.5	19.9	19.9	166	-	PW	120 (47)
NL 0355/46PW	0355	46	49.0	49.0	19.3	19.3	166	-	PW	120 (47)
NL 0360/44PW	0360	44	47.0	47.0	18.5	18.5	180	-	PW	120 (47)
NL 0375/43PW	0375	43	44.0	44.0	17.3	17.3	200	-	PW	120 (47)
NL 0390/47PW	0390	47	44.5	44.5	17.5	17.5	180	-	PW	120 (47)
NL 0400/44PW	0400	44	42.5	42.5	16.7	16.7	200	-	PW	120 (47)
NL 0425/46PW	0425	46	40.5	40.5	15.9	15.9	200	-	PW	120 (47)
NL 0435/47PW	0435	47	40.0	40.0	15.7	15.7	200	380	PW	102 (40)
NL 0450/45PW	0450	45	38.0	38.0	15.0	15.0	220	-	PW	120 (47)
NL 0475/47PW	0475	47	36.5	36.5	14.4	14.4	220	-	PW	120 (47)

product solution

# NBC Nylon 6.6 Mesh

MESH CODE	MESH OPENING µm	OPEN AREA (%)	WARP MESH COUNT /in	WARP MESH COUNT /in	WARP MESH COUNT /cm	WARP MESH COUNT /cm	THREAD DIAMETER µm	MESH THICKNESS µm	WEAVE TYPE	STANDARD WIDTH cm (in)
NL 0495/48PW	0495	48	35.5	35.5	14.0	14.0	220	-	PW	120 (47)
NL 0510/47PW	0510	47	34.0	34.0	13.4	13.4	235	440	PW	102 (40)
NL 0525/50PW	0525	50	34.0	34.0	13.4	13.4	220	-	PW	120 (47)
NL 0555/48PW	0555	48	31.5	31.5	12.4	12.4	250	-	PW	120 (47)
NL 0595/50PW	0595	50	30.0	30.0	11.8	11.8	250	-	PW	120 (47)
NL 0625/51PW	0625	51	29.0	29.0	11.4	11.4	250	-	PW	120 (47)
NL 0670/53PW	0670	53	27.5	27.5	10.8	10.8	250	-	PW	120 (47)
NL 0715/52PW	0715	52	25.5	25.5	10.0	10.0	280	-	PW	120 (47)
NL 0760/53PW	0760	53	24.5	24.5	9.6	9.6	280	-	PW	120 (47)
NL 0800/55PW	0800	55	23.5	23.5	9.3	9.3	280	-	PW	120 (47)
NL 0860/51PW	0860	51	21.0	21.0	8.3	8.3	350	-	PW	120 (47)
NL 0890/52PW	0890	52	20.5	20.5	8.1	8.1	350	-	PW	120 (47)
NL 0990/61PW	0990	61	20.0	20.0	7.9	7.9	280	520	PW	102 (40)
NL 1000/56PW	1000	56	19.0	19.0	7.5	7.5	350	-	PW	120 (47)
NL 1120/53PW	1120	53	16.5	16.5	6.5	6.5	430	-	PW	120 (47)
NL 1250/54PW	1250	54	15.0	15.0	5.9	5.9	430	-	PW	120 (47)
NL 1400/60PW	1400	60	14.0	14.0	5.5	5.5	430	-	PW	120 (47)
NL 1600/57PW	1600	57	12.0	12.0	4.7	4.7	500	-	PW	120 (47)
NL 1800/61PW	1800	61	11.0	11.0	4.3	4.3	500	-	PW	120 (47)
NL 2000/56PW	2000	56	9.5	9.5	3.7	3.7	670	-	PW	120 (47)