

product solution

NBC Polyethylene Mesh

NBC's Polyethylene mesh is designed for filtering applications, and is chemical resistant with good resistance to both acids and alkalines.

FEATURES

- 8-35% elongation when both dry and wet
- 85-97% elasticity recovery when 3% stretched
- Good weathering resistance

PRODUCT OPTIONS

Mesh Specifications vary to meet a variety of applications. This mesh is available in the following ranges:

Thread Diameter

86 - 770 μm

Mesh Count

5 - 156 per inch

Mesh Opening

112 - 4310 μm

Pattern

Plain, Twill, Satin

Primary Treatments are optional procedures that chemically enhance the performance of the mesh or manipulate its appearance in various ways. These treatments include:

Dyeing

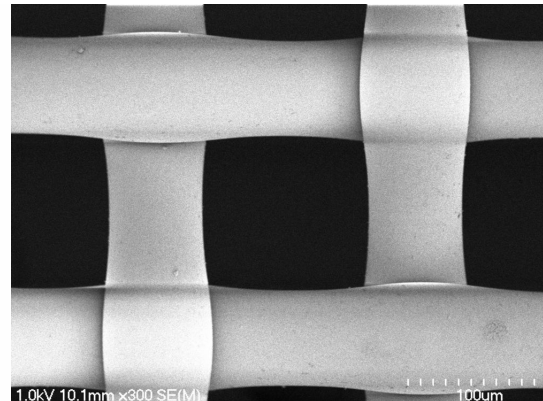
Dyeing changes the mesh's color for an aesthetic effect and is available with minimum orders of 5,500 yards

Corona Treatment

Corona enhances the mesh's adhesion property and adds a hydrophilic property

Calendering

Calendering creates a flatter surface and can thin out the mesh as well as affect the mesh's open area



product solution

NBC Polyethylene Mesh

Secondary Treatments are optional procedures that physically manipulate the mesh to prepare it for inclusion in a custom product. These treatments include:

Die Cutting

Die cutting creates precisely cut pieces of mesh in various shapes and sizes

Welding

Welding melds pieces of the mesh together

Slitting

Slitting creates evenly divided sections of mesh

Sewing

Sewing also holds folded pieces of mesh together

Pleating

Pleating folds the mesh together in order to correspond with potting

Stretching

Stretching allows easier attachment to mesh frames

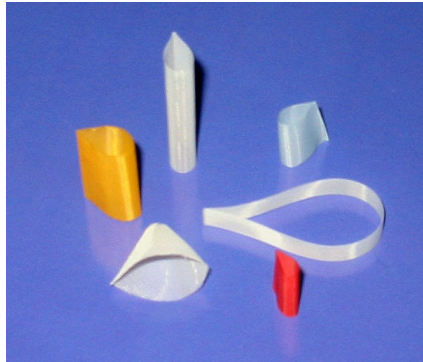
product solution

NBC Polyethylene Mesh

PRODUCT IMAGES



Die Cutting (Secondary Treatment)



Welding (Secondary Treatment)



Slitting (Secondary Treatment)



Sewing (Secondary Treatment)



Pleating (Secondary Treatment)

product solution

NBC Polyethylene Mesh

ITEM DETAILS

MESH CODE	MESH OPENING µm	OPEN AREA (%)	WARP MESH COUNT /in	WARP MESH COUNT /in	WARP MESH COUNT /cm	WARP MESH COUNT /cm	THREAD DIAMETER µm	MESH THICKNESS µm	WEAVE TYPE	STANDARD WIDTH cm (in)
PE 0115/33PW	0115	33	156.0	100.0	61.4	39.4	086	-	PW	102 (40)
PE 0125/35PW	0125	35	144.0	100.0	56.7	39.4	086	-	PW	102 (40)
PE 0135/37PW	0135	37	130.0	100.0	51.2	39.4	086	-	PW	102 (40)
PE 0145/39PW	0145	39	120.0	102.0	47.2	40.2	086	-	PW	102 (40)
PE 0155/39PW	0155	39	112.0	90.0	44.1	35.4	86/106	-	PW	102 (40)
PE 0180/38PW	0180	38	96.0	76.0	37.8	29.9	106/122	-	PW	102 (40)
PE 0225/42PW	0225	42	83.0	64.0	32.7	25.2	122	-	PW	102 (40)
PE 0260/43PW	0260	43	67.0	61.0	26.4	24.0	122/150	-	PW	102 (40)
PE 0290/43PW	0290	43	59.0	56.0	23.2	22.0	150	-	PW	102 (40)
PE 0350/45PW	0350	45	50.0	47.0	19.7	18.5	173	-	PW	102 (40)
PE 0405/43PW	0405	43	42.0	40.0	16.5	15.7	212	-	PW	102 (40)
PE 0525/47PW	0525	47	34.0	32.0	13.4	12.6	244	-	PW	102 (40)
PE 0760/52PW	0760	52	25.0	23.0	9.8	9.1	298	-	PW	102 (40)
PE 0925/53PW	0925	53	20.0	20.0	7.9	7.9	345	-	PW	102 (40)
PE 1240/61PW	1240	61	16.0	16.0	6.3	6.3	345	-	PW	102 (40)
PE 1570/55PW	1570	55	12.0	12.0	4.7	4.7	545	-	PW	102 (40)
PE 3085/72PW	3085	72	7.0	7.0	2.8	2.8	545	-	PW	102 (40)
PE 4310/72PW	4310	72	5.0	5.0	2.0	2.0	770	-	PW	102 (40)