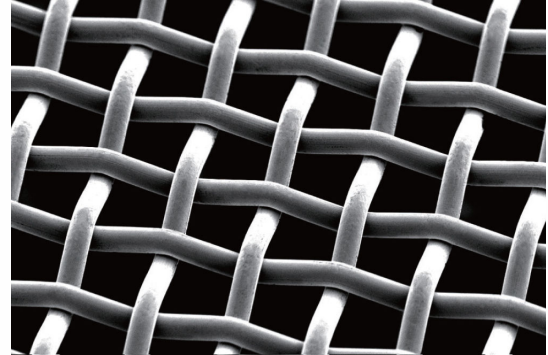


product solution

# NBC W40 Metal Mesh

W-40 metal mesh is woven with tungsten wire, which has greater physical stability and print repeatability than even NBC super stainless steel wire mesh.



## ITEM DETAILS

MESH CODE	MESH COUNT /in	MESH COUNT /cm	WIRE DIAMETER $\mu\text{m}$	MESH OPENING $\mu\text{m}$	OPEN AREA %	Theoretical Ink Vol $\text{cm}^3/\text{m}^2$	THICKNESS $\mu\text{m}$ (normal)	THICKNESS $\mu\text{m}$ (standard calender)	THICKNESS $\mu\text{m}$ (heavy calender)	THICKNESS $\mu\text{m}$ (super heavy calender)
W40-325-016 62/20	325	128	16	62	63	23	36 $\pm$ 2	25	22	N/A
W40-380-014 53/16	380	150	14	53	62	20	32 $\pm$ 2	26	21	18
W40-430-013 46/13	430	169	13	46	61	18	29 $\pm$ 2	N/A	21	17